

-20°C
+70°C

STX280

Automated
Incubator

- More Integration Flexibility
- Higher Access Speed
- 16-Bit Digital Climate Control

Service Port



StoreX
Series

STX280

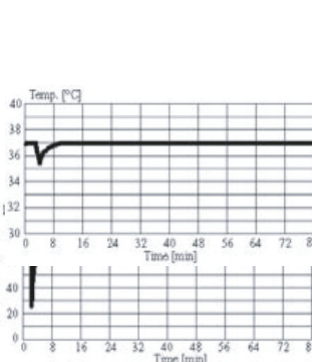
Stable and Precise Climate Conditions

The STX280 is the classical 198 MTP-size incubator improved with increased 280 MTP capacity and newly implemented Flush Gate. The newly developed handling with higher speeds, spring loaded instead of counter weight, and flush gate improves the overall performance of the unit. This unit can be stacked one on top of the other to give high throughput results.

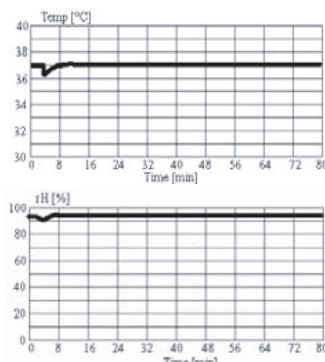
The Flush Gate simplifies integration by omitting any obstacle in the Gate area.

Access

Through full-sized user door



Through the small robotic gate



Climate Options

Type	Temperature	Humidity	Description	Order Nr. Stand Alone	Order Nr. Bench Top
STX280-IC	33..50°C (70°C)	max. 95%	Incubator	9122 05 10	9123 05 10
STX280-HC 1)	04..25°C	max. 90%	Humid Cooler	9122 05 11	9123 05 11
STX280-DC2 1)3)	04..25°C	04..50%	Dry Storage	9123 05 07	9123 05 08
STX280-HR 1)	04..50°C (70°C)	90..95%	Humid Wide Range	9122 05 12	9123 05 12
STX280-DR2 1) 3)	04..50°C	02..50%	Dry Wide Range	9122 05 05	9122 05 22
STX280-AR 1) 2)	04..50°C	20..90%	Humidity Controlled	9122 05 21	9123 05 19
STX280-DF 1)	-20..0°C 4)	02..45%	Deep Freezer	9122 05 27	9122 05 31
STX280-NC	-	-	No Climate	9123 05 14	9123 05 15

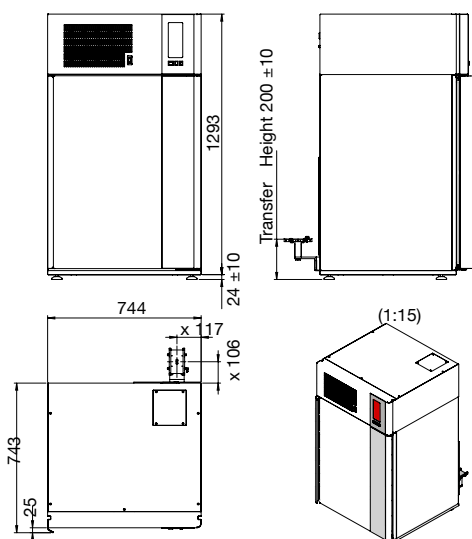
- 1) Humidity depends on temperature setting
- 2) Humidity Adjustable
- 3) Adjustable dehumidification
- 4) up to +20°C on request

Options

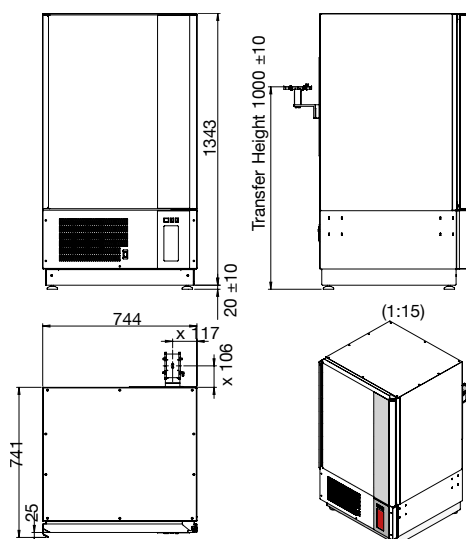
	Order Nr.	Gassing Option	Order Nr.
High temperature 70°C capability	9122 06 02	Fast CO2	9118 11 12
Bar Code Reader Option	9118 11 03	Fast N2	9118 11 13
Plate Presence Sensor	9121 00 62	Fast O2	9118 11 14
Disposal Tips update kit up to 100mm height	9118 12 23	Additional CO2	9118 11 07
Fast access for time critical applications	9111 10 00	Additional N2	9118 11 11
N-Way Decontamination	9122 05 28	Additional O2	9118 11 08
Liconel self decontaminating incubator chamber	9122 05 25		
Easy Clean option	9122 05 14		
Linear Shaker, Amplitude 1-100mm, 12-300 rpm	9122 05 15		
Side Gate on left side wall	9122 05 16		
Mirrored Gate Location	9122 05 17		
Steam Injection			
UCI Universal Communication Interface			

Dimensions

Bench-Top (BT)



Stand-Alone (SA)



Capacity

Plate Type	Plate Height	Plate capacity of unit
NTP	5 mm	580
	11 mm	380
1536	12 mm	350
MTP	17 mm	280
	22 mm	230
	23 mm	220
	24 mm	210
	27 mm	190
DWP	44 mm	130
	53 mm	100
DIT200	66 mm	90
DIT1000	104 mm	50



www.Liconic.com
 Europe & International: Liconic AG, Liechtenstein
 UK & Nordic: Liconic UK Ltd, Manchester
 US & Asia: Liconic Inc, Woburn MA
 © Liconic AG, 03.2022