



STS15

Solar Incubator

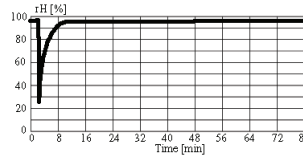
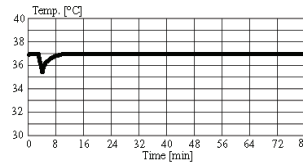
STS15 Series Incubator
Automated Random Access Plate Handling
Programmable Full Spectrum Illumination

STS15

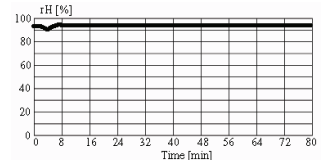
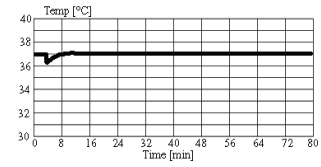
The LiCONiC STS15 is the first fully Automated Solar Incubator on the market. The STS15 incorporates latest ultra-bright light-sources. For the first time the STS15 combines freely programmable illumination flexibility with powerful integration into any robotic platform.

The STS15 has been optimized for optogenetic approaches in mammalian cell culture and for plant (protoplast) and cyanobacteria research. The STS15 opens entirely new possibilities in these new scientific domain and boosts processes the field of synthetic biology.

Access through full-sized user door



Access through the small robotic gate



Climate Options

Type	Temperature	Humidity	Description	Order Nr. STS 15 Stand Alone	Order Nr. STS15 IC SA
STS15-IC	33..50°C (70°C)	max. 95%	Incubator	9122 05 10	9123 05 10
STS15-HC ¹⁾	04..25°C	max. 90%	Humid Cooler	9122 05 11	9123 05 11
STS15-DC2 ¹⁾³⁾	04..25°C	04..50%	Dry Storage	9123 05 07	9123 05 08
STS15-HR ¹⁾	04..50°C (70°C)	90..95%	Humid Wide Range	9122 05 12	9123 05 12
STS15-DR ¹⁾³⁾	04..50°C	02..50%	Dry Wide Range	9122 05 05	9122 05 22
STS15-AR ²⁾	04..50°C ⁴⁾	20..90%	Humidity Controlled	9122 05 21	9123 05 19
STS15-DF ¹⁾	-20..0°C	02..45%	Deep Freezer	9122 05 27	9122 05 31
STS15-NC	-	-	No Climate	9123 05 14	9123 05 15

1) Humidity depends on temperature setting / 2) Humidity Adjustable / 3) Adjustable dehumidification / 4) up to +20°C on request



www.Liconic.com

Europe: Liconic AG, Liechtenstein

Liconic UK Ltd, Manchester

US & International: Liconic Inc, Woburn MA

22.05.2014

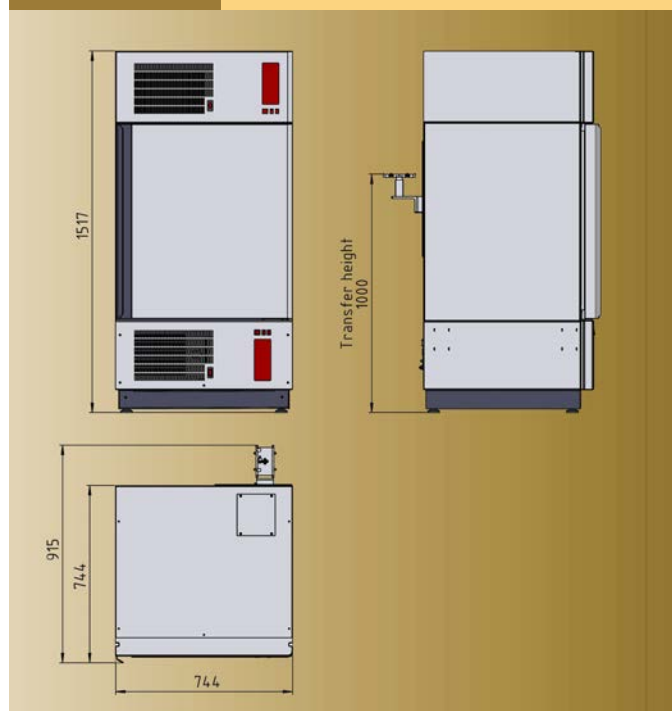
© Liconic AG

STS15

The STS15 allows unlimited adjustments of the whole spectrum of visible light. Both wavelength and intensity are freely programmable individually.

Options			
	Order Nr.	Gassing Option	Order Nr.
High temperature 70°C capability	9122 06 02	Fast CO2 Gassing Option	9118 11 12
Bar Code Reader Option	9118 11 03	Fast N2 Gassing Option	9118 11 13
Plate Presence Sensor	9121 00 62	Fast O2 Gassing Option	9118 11 14
Disposal Tips upgrade kit up to 100mm height	9118 12 23	Additional CO2 Gassing Option	9118 11 07
Fast access for time critical applications	9111 10 00	Additional N2 Gassing Option	9118 11 11
N-Way Decontamination	9122 05 28	Additional O2 Gassing Option	9118 11 08
Liconel self decontaminating incubator chamber	9122 05 25		
Easy Clean option	9122 05 14		
Linear Shaker, Amplitude 1-100mm, 12-300 rpm	9122 05 15		
Side Gate on left side wall	9122 05 16		
Mirrored Gate Location	9122 05 17		
Steam Injection			
UCI Universal Communication Interface			

Dimensions



www.Liconic.com
 Europe: Liconic AG, Liechtenstein
 Liconic UK Ltd, Manchester
 US & International: Liconic Inc, Woburn MA
 22.05.2014
 © Liconic AG